



CLIMATE freeze



Operating temperature
-22 -18°C

Freezer CLIMATE freeze Pastry Line

The CLIMATE Freeze freezer is a refrigerated cabinet equipped with a monoblock unit with a ventilated refrigeration system, designed to meet the requirements of climate class 5 (tropicalized). The refrigeration unit is easily removable, facilitating maintenance and replacement operations.

Caratteristiche

The unit is equipped with an easy-extraction mechanism, allowing for quick and convenient maintenance or replacement. The cataphoresis-treated evaporator is equipped with an automatic defrosting system managed by a digital controller. Condensed water is evaporated via a corrosion-resistant coil made of AISI 316 low-carbon steel.

Porte

The doors are reversible, featuring self-closing and the option to lock them in the 100° open position. The seven-chamber magnetic seal is easily removable for cleaning and maintenance.

Dettagli

The cabinet is equipped with a system of extractable and adjustable guides and racks, made of AISI 304 stainless steel.

Comandi

The capacitive touch display ensures a modern and intuitive interaction. The feet, also made of AISI 304 stainless steel, are adjustable to adapt to different installation needs.

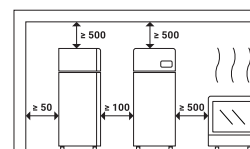
Freezer CLIMATE freeze

Interior fittings	Printed tray holder
Grids included	Not included
Pairs of runners included	N.24 - EN1 600x400
Maximum capacity	N.24 (step 55 mm) - EN 1 600x400
Pairs of runners included	N.20 "L" - EN 2 600x800
Maximum capacity	N.27 (step 50 mm) or N.39 (step 35 mm) - EN 2 600x800
LED strip	▪
WiFi kit	□ €
Bluetooth kit	□ €
Key lock	▪
Air distribution duct	▪
Door opening pedal	▪
Wheel kit	□ €
Cable with Schuko or UK plug	▪ (Schuko)
Diamond-cut bottom with drain hole	▪

▪ Standard | □ Optional | □ € Paid optional

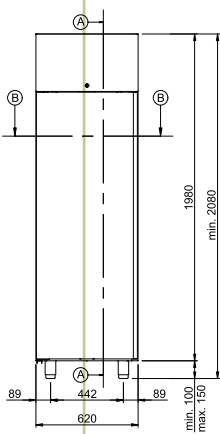
- A. Piano di sezione
- B. Piano di sezione
- C. Uscita cavo di alimentazione (lunghezza 2 mt)
ATTENZIONE! In fase di installazione prevedere l'intervento di un elettricista qualificato per il collegamento ad un quadro elettrico.

Distanze minime di rispetto
ATTENZIONE! La distanza da apparecchiature calde (ad es. friggitorici o forni) deve essere di almeno 500 mm.

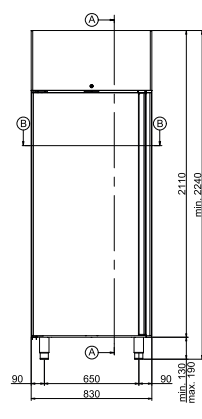
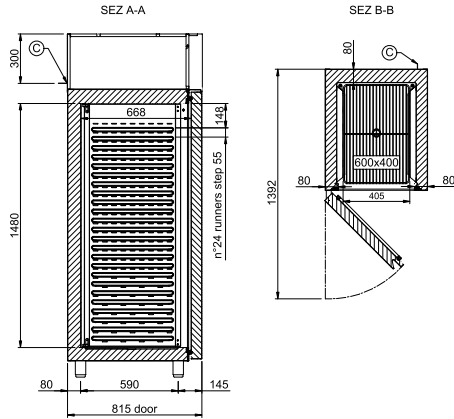




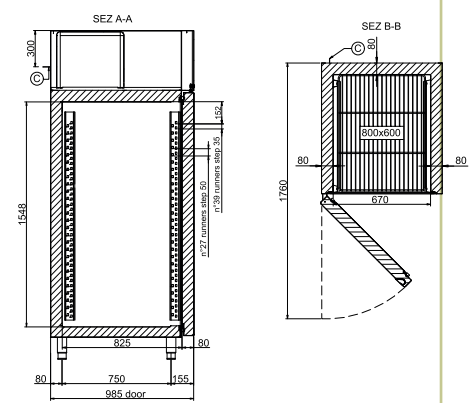
Caratteristiche tecniche/Technical features



CLIMATE freeze EN1



CLIMATE freeze EN2



Modello/Model	CLIMATE freeze EN1	
Width	mm	620
Depth	mm	815
Height	mm	2080-2130
Net weight (kg)	kg	131
Packaging WxDxH (mm)	mm	650x840x2195
Temperature	°C	(-22/-18)
Energy class		E
Gross volume	L	355
Net freezing volume	L	324
Climate class		5 +40°C / 40% R.H.
Refrigerant gas		R290
Defrosting		HOT GAS
Condensate evaporation		Evaporation of condensate water via a corrosion-resistant coil made of AISI 316 with a low carbon content.
Condensation		AIR
Cooling capacity	W	-
Voltage		AC230V 1N+T 50Hz
Special voltages		(on request) Optional
Power consumption	W	580
Current consumption	A	-
Noise level	dB	< 70
NTC temperature sensor		standard
Floor support		Adjustable AISI 304 stainless steel feet
Heights that support a floor	mm	Feet: 100-150 Wheels: 110 - Ø 80 Plinth: 20
Light under the control panel		standard
Control		Flush-mounted capacitive LCD display

Modello/Model	CLIMATE freeze EN2	
Width	mm	830
Depth	mm	985
Height	mm	2240-2300
Net weight (kg)	kg	188
Packaging WxDxH (mm)	mm	860x1030x2430
Temperature	°C	(-22/-18)
Energy class		B
Gross volume	L	851
Net freezing volume	L	696
Climate class		5 +40°C / 40% R.H.
Refrigerant gas		R290
Defrosting		HOT GAS
Condensate evaporation		Evaporation of condensate water via a corrosion-resistant coil made of AISI 316 with a low carbon content.
Condensation		AIR
Cooling capacity	W	652
Voltage		AC230V 1N+T 50Hz
Special voltages		(on request) Optional
Power consumption	W	860
Current consumption	A	4,70
Noise level	dB	< 70
NTC temperature sensor		standard
Floor support		Adjustable AISI 304 stainless steel feet
Heights that support a floor	mm	Feet: 100-150 Wheels: 110 - Ø 80 Plinth: 20
Control		Flush-mounted capacitive LCD display