



CLIMATE freeze



Operating temperature
-22/-18 °C

Freezer with trays CLIMATE freeze Gastronomy Line

Climate Freeze is a tray freezer used for the rapid cooling and freezing of products.

Caratteristiche

Refrigerated cabinets with a monoblock ventilated refrigeration system designed to ensure optimal performance in climate class 5 (tropicalized). The unit is equipped with an easy-extraction mechanism, allowing for quick and convenient maintenance or replacement. The cataphoresis-treated evaporator is equipped with an automatic defrosting system managed by a digital controller. Condensed water is evaporated via a corrosion-resistant coil made of AISI 316 low-carbon steel.

Porte

The doors are reversible, featuring self-closing and the option to lock them in the 100° open position. The seven-chamber magnetic seal is easily removable for cleaning and maintenance.

Dettagli

The cabinet is equipped with a system of extractable and adjustable guides and racks, made of AISI 304 stainless steel.

Comandi

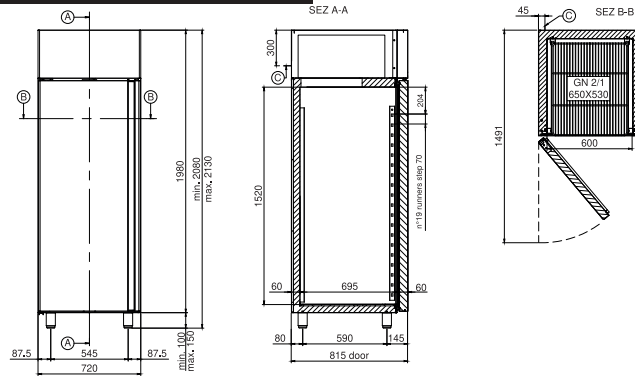
The capacitive touch display ensures a modern and intuitive interaction. The feet, also made of AISI 304 stainless steel, are adjustable to adapt to different installation needs.

Freezer CLIMATE freeze

Interior fittings	Stainless Steel Rails and Racks AISI 304 - Adjustable and Removable.
Grids included	N.3 - GN 2/1 - 650x530 - plastified
Maximum load per grid (kg)	37
Pair of runners included	N.3 "C" - GN 2/1 - 650x530
Maximum capacity	N.19 (step 70 mm) - GN 2/1 - 650x530
Light under control panel	▪
LED strip	<input type="checkbox"/> €
WiFi kit	<input type="checkbox"/> €
Bluetooth kit	<input type="checkbox"/> €
Key lock	▪
Air distribution duct	<input type="checkbox"/> €
Door opening pedal	<input type="checkbox"/> €
Wheel kit	<input type="checkbox"/> €
Cable with Schuko or UK plug	▪ (Schuko)
▪ Standard <input type="checkbox"/> Optional <input type="checkbox"/> € Opzione a pagamento	

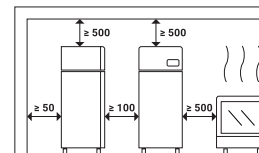


Caratteristiche tecniche/Technical features



- A. Piano di sezione
- B. Piano di sezione
- C. Uscita cavo di alimentazione (lunghezza 2 mt)
ATTENZIONE! In fase di installazione prevedere l'intervento di un elettricista qualificato per il collegamento ad un quadro elettrico.

Distanze minime di rispetto
ATTENZIONE! La distanza da apparecchiature calde (ad es. friggitorici o forni) deve essere di almeno 500 mm.



Modello/Model	CLIMATE freeze	
Width	mm	720
Depth	mm	815
Height	mm	2080-2130
Net weight (kg)	kg	112
Packaging WxDxH (mm)	mm	760x860x2240
Temperature	°C	(-22/-18)
Energy class		C
Gross volume	L	639
Net freezing volume	L	475
Climate class		5 +40°C / 40% R.H.
Refrigerant gas		R290
Defrosting		ELECTRIC
Condensation evaporation		Condensate evaporation via a corrosion-resistant coil in AISI 316 low carbon steel.
Condensation		AIR
Cooling capacity	W	568
Voltage		AC230V 1N+T 50Hz
Special voltages		(on request) Optional
Power consumption	W	530
Current consumption	A	3,10
Noise level	dB	< 70
NTC probe for temperature detection		standard
Floor support		Adjustable AISI 304 stainless steel feet
Floor support heights	mm	Feet: 100-150 Wheels: 110 - Ø 80 Plinth: 20
Control		Capacitive touch display