



CLIMATE chill



Operating temperature
- 2 + 10°C

Freezer CLIMATE chill Pastry Line

The CLIMATE chill refrigerator is a ventilated refrigerated cabinet, equipped with exclusive electronic temperature and humidity control, which guarantees optimal conditions for product preservation.

Caratteristiche

Refrigerated cabinets with a monoblock ventilated refrigeration system designed to ensure optimal performance in climate class 5 (tropicalized). The unit is equipped with an easy-extraction mechanism, allowing for quick and convenient maintenance or replacement. The cataphoresis-treated evaporator is equipped with an automatic defrosting system managed by a digital controller. Condensed water is evaporated via a corrosion-resistant coil made of AISI 316 low-carbon steel.

Porte

The doors are reversible, featuring self-closing and the option to lock them in the 100° open position. The seven-chamber magnetic seal is easily removable for cleaning and maintenance.

Dettagli

The cabinet is equipped with a system of extractable and adjustable guides and racks, made of AISI 304 stainless steel.

Comandi

The capacitive touch display ensures a modern and intuitive interaction. The feet, also made of AISI 304 stainless steel, are adjustable to adapt to different installation needs.

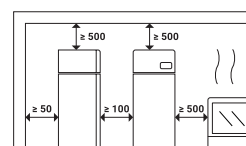
Refrigerator CLIMATE chill

Interior fittings	Printed tray holder
Grids included	Not included
Pairs of runners included	N.24 - EN1 600x400
Maximum capacity	N.24 (step 55 mm) - EN 1 600x400
Pairs of runners included	N.20 "L" - EN 2 600x800
Maximum capacity	N.27 (step 50 mm) or N.39 (step 35 mm) - EN 2 600x800
LED strip	▪
WiFi kit	□ €
Bluetooth kit	□ €
Key lock	▪
Air distribution duct	▪
Door opening pedal	▪
Wheel kit	not available
Cable with Schuko or UK plug	▪ (Schuko)
Diamond-cut bottom with drain hole	▪

▪ **Standard** | □ **Optional** | □ € **Paid Optional**

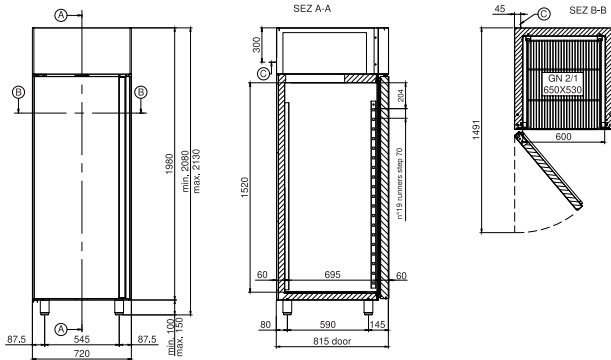
- A. Piano di sezione
- B. Piano di sezione
- C. Uscita cavo di alimentazione (lunghezza 2 mt)
ATTENZIONE! In fase di installazione prevedere l'intervento di un elettricista qualificato per il collegamento ad un quadro elettrico.

Distanze minime di rispetto
ATTENZIONE! La distanza da apparecchiature calde (ad es. friggitorici o forni) deve essere di almeno 500 mm.

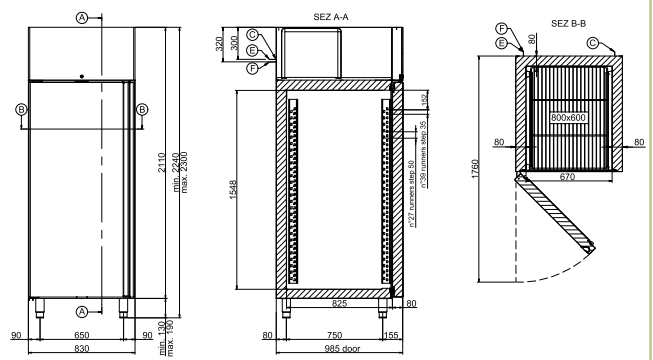




Caratteristiche tecniche/Technical features



CLIMATE chill EN1



CLIMATE chill EN2

Modello/Model		CLIMATE chill EN1
Width	mm	620
Depth	mm	815
Height	mm	2080-2130
Net weight (kg)	kg	152
Packaging WxDxH (mm)	mm	650x840x2195
Temperature	°C	(-2/+10)
Energy class		B
Gross volume	L	355
Net refrigeration volume	L	324
Climate class		5 +40°C / 40% R.H.
Refrigerant gas		R290
Defrosting		HOT GAS
Condensation evaporation		Condensate evaporation via a corrosion-resistant coil in AISI 316 low carbon steel.
Condensation		AIR
Cooling capacity	W	-
Voltage		AC230V 1N+T 50Hz
Special voltages		(on request) Optional
Power consumption	W	210
Current consumption	A	-
Noise level	dB	< 70
NTC probe for detecting temperatures and humidifier		standard
Floor support		Adjustable AISI 304 stainless steel feet
Floor support heights	mm	Feet: 100-150 Wheels: 110 - Ø 80 Plinth: 20
Control		Display touch capacitive 5"

Modello/Model		CLIMATE chill EN2
Width	mm	830
Depth	mm	985
Height	mm	2240-2300
Net weight (kg)	kg	179
Packaging WxDxH (mm)	mm	860x1030x2430
Temperature	°C	(-2/+10)
Energy class		B
Gross volume	L	851
Net refrigeration volume	L	696
Climate class		5 +40°C / 40% R.H.
Refrigerant gas		R290
Defrosting		HOT GAS
Condensation evaporation		Condensate evaporation via a corrosion-resistant coil in AISI 316 low carbon steel.
Condensation		AIR
Cooling capacity	W	-
Voltage		AC230V 1N+T 50Hz
Special voltages		(on request) Optional
Power consumption	W	580
Current consumption	A	-
Noise level	dB	< 70
NTC probe for detecting temperatures and humidifier		standard
Floor support		Adjustable AISI 304 stainless steel feet
Floor support heights	mm	Feet: 100-150 Wheels: 110 - Ø 80 Plinth: 20
Control		Display touch capacitive 5"