



CLIMATE chill



Operating temperature
- 2 + 10 °C

Refrigerator CLIMATE chill *Gastronomy Line*

The CLIMATE chill refrigerator is a ventilated refrigerated cabinet, equipped with exclusive electronic temperature and humidity control, which guarantees optimal conditions for product preservation.

Caratteristiche

Refrigerated cabinets with a monoblock ventilated refrigeration system designed to ensure optimal performance in climate class 5 (tropicalized). The unit is equipped with an easy-extraction mechanism, allowing for quick and convenient maintenance or replacement. The cataphoresis-treated evaporator is equipped with an automatic defrosting system managed by a digital controller. Condensed water is evaporated via a corrosion-resistant coil made of AISI 316 low-carbon steel.

Porte

The doors are reversible, featuring self-closing and the option to lock them in the 100° open position. The seven-chamber magnetic seal is easily removable for cleaning and maintenance.

Dettagli

The cabinet is equipped with a system of extractable and adjustable guides and racks, made of AISI 304 stainless steel.

Comandi

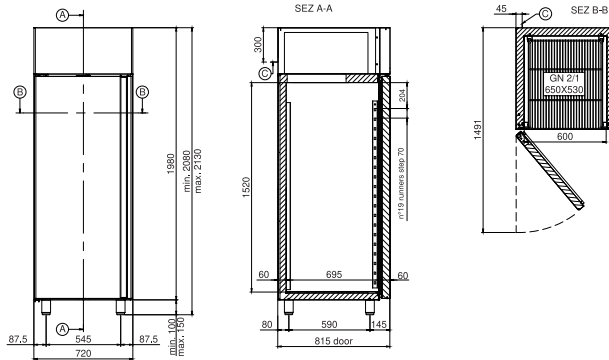
The capacitive touch display ensures a modern and intuitive interaction. The feet, also made of AISI 304 stainless steel, are adjustable to adapt to different installation needs.

Refrigerator CLIMATE chill

Interior fittings	Stainless Steel Rails and Racks AISI 304 - Adjustable and Removable.
Grids included	N.3 - GN 2/1 - 650x530 -Plasticized
Maximum load per grid (kg)	37
Pair of runners included	N.3 "C" - GN 2/1 - 650x530
Maximum capacity	N.19 (step 70 mm) - GN 2/1 - 650x530
Light under control panel	▪
LED strip	□ €
WiFi kit	□ €
Bluetooth kit	□ €
Key lock	▪
Air distribution duct	□ €
Door opening pedal	□ €
Wheel kit	□ €
Cable with Schuko or UK plug	▪ (Schuko)
▪ Standard □ Optional □ € Paid Option	

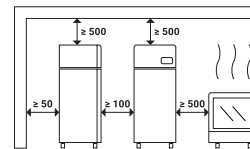


Caratteristiche tecniche/Technical features



- A. Piano di sezione
- B. Piano di sezione
- C. Uscita cavo di alimentazione (lunghezza 2 mt)
ATTENZIONE! In fase di installazione prevedere l'intervento di un elettricista qualificato per il collegamento ad un quadro elettrico.

Distanze minime di rispetto
ATTENZIONE! La distanza da apparecchiature calde (ad es. friggitorici o forni) deve essere di almeno 500 mm.



Modello/Model		CLIMATE chill	
Width	mm	720	
Depth	mm	815	
Height	mm	2080-2130	
Net weight (kg)	kg	112	
Packaging WxDxH (mm)	mm	760x860x2240	
Temperature	°C	(-2/+10)	
Energy class		B	
Gross volume	L	639	
Net refrigeration volume	L	475	
Climate class		5 +40°C / 40% R.H.	
Refrigerant gas		R290	
Defrosting		ELECTRIC	
Condensation evaporation		Condensate evaporation via a corrosion-resistant coil in AISI 316 low carbon steel.	
Condensation		AIR	
Cooling capacity	W	520	
Voltage		AC230V 1N+T 50Hz	
Special voltages		(on request) Optional	
Power consumption	W	320	
Current consumption	A	2,30	
Noise level	dB	< 70	
NTC probe for temperature detection		standard	
Floor support		Adjustable AISI 304 stainless steel feet	
Floor support heights	mm	Feet: 100-150 Wheels: 110 - Ø 80 Plinth: 20	
Control		Capacitive touch display	